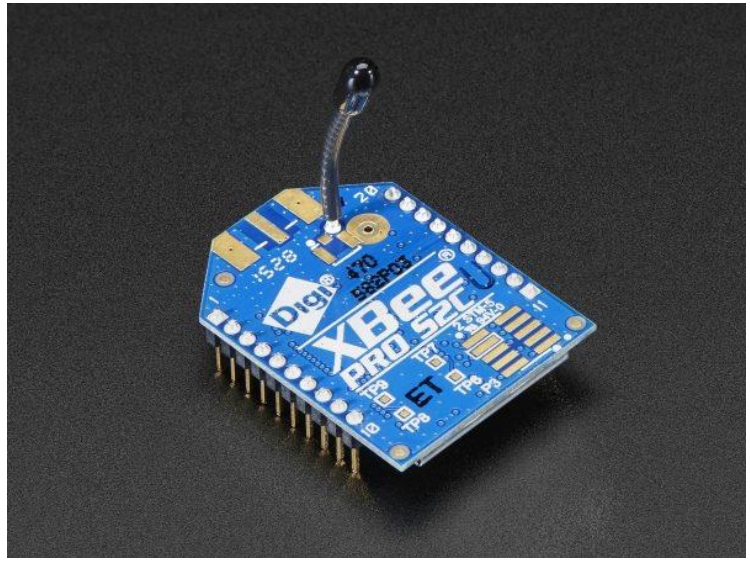


設備編號	設備名稱	設備圖片
1	<p>Raspberry PI 4 (含電源供應器) 1 套</p>	 <p>The image shows two photographs. The top photograph is a Raspberry Pi 4 Model B board, a green single-board computer with various ports including USB, HDMI, and Ethernet. The bottom photograph shows the official Raspberry Pi power supply, a silver brick with a power cord and a micro-USB cable.</p>
2	<p>記憶卡 32g (含轉卡) 1 張</p>	 <p>The image shows two photographs. The left photograph is the retail packaging for a SanDisk Ultra microSDXC UHS-I memory card, 32GB capacity, with a red and white design. The right photograph shows the actual black SanDisk 32GB microSD card and its white-to-red adapter.</p>
3	<p>USB-to-Serial 傳輸線 (PL2303HXD) 1 條</p>	 <p>The image shows two photographs. The left photograph is a black USB-to-Serial cable with a pink USB-A connector and a 4-pin header. The right photograph shows the same cable connected to the UART pins of a Raspberry Pi board.</p>

4

Zigbee 模組  
1 對



5

相機模組  
1 台

